

THE NEW MODERN CE SERIES



ALL MODELS

Designed and Built by:

OFFSHORE YACHTS

Vision:

OFFSHORE YACHTS has built a legacy and reputation building high quality semi-custom coastal cruisers. The boats have been known for their seakeeping ability and extremely comfortable ride, hence the “Softest Ride on the Water” moniker. OFFSHORE has built 300 + yachts with a lifecycle that has spanned typically over 20 years for each model. This lifecycle is a tribute to their well thought out designs. Resale is very strong for the Offshore Yachts brand and the goal with this new offering is to build on that strength while broadening the base of prospective owners.

The vision for the new CE 65’ thru 72’ Series was to create a new model with a broad market reach while maintaining the essence and DNA of the Offshore brand. Building on the updated classic styling of her predecessors and bringing a more modern interpretation that will be relevant for years to come. Below are the key points executed in the design.

Offshore DNA:

- *These new models are built on the successful sea keeping reputation of the Offshore Yacht Hull. Not a revolution but a modern evolution.*
- *Full walkaround decks are ample and have an added benefit of only one step for the full perimeter*
- *Built with latest technology multiaxial frp materials, she will be lighter displacement, yet seaworthy, comfortable and more efficient overall.*
- *‘Built to last’ in terms of design and construction. Her high quality fit and finish will be familiar to our existing base and very impressive to newcomers.*

What’s new in Hull Design:

- *The soft, predictably smooth ride will continue. The more vertical bow produces an even deeper V sections that assures an even softer ride. The longer waterline by virtue of the more vertical bow provides a thinner angle of entry producing a steady ride with less tendency to accelerate and decelerate (less pitching effect) as it enters a wave.*
- *The longer WL due to the more plumb bow design provides better efficiency and lower fuel consumption at all speeds. To illustrate this point, if you have a #100,000 lb. displacement and the waterline is 65’ instead of 60’, the cross section of the yacht is about 8% smaller and so is the hull drag. WL matters most.*
- *Her hard double chine hull is more powerful at the bow and assures stability and a dryer ride underway with no hull noise/slap at anchor or in a marina because it does not cross the WL save for the lower chine and at the very forward bow.*
- *Her aft sections are flatter to gain more efficiency at higher speeds as well as to contain draft to a minimum.*
- *She has a more classic hull forward and more modern aft.*
- *Her prop tunnels are extremely soft and we expect to have good control in following seas with a skeg/short keel that has been well tested.*

Windows on the world:

- *A near all glass main deck superstructure, provides spectacular 360-degree views and gives the yacht a true big-boat feel.*
- *Large hull side windows in all lower deck cabins and stairwell feel open and spacious allowing the views inside. Bringing the outdoors in never looked so good.*



Layout & Design:

- *Huge aft entertaining deck with generous built in sofa and hand-crafted teak dining table*
- *Choice of new aft or midship galley arrangements perfect for open concept living and socializing.*
- *Large salon with sofa and high low table with integrated high low TV on the starboard side.*
- *New modern lower helm station for amazing visibility and a comfortable sofa and table.*
- *Completely open concept main deck with zero obstructions.*
- *An amazing four cabin arrangement for the most ‘heads and beds’ possible.*
- *Another aft cabin/and utility room/head provides flexibility for owners with a captain or extra guest onboard.*
- *All of this and turn key too! Our in-house design team meticulously fashions every inch of your boat from fabrics and upholstery to carpets and cutlery. The end result is a perfectly appointed and ready to go yacht.*



What's new "off-the-grid":

- *New energy efficient Termodinamica low-amp reverse cycle air conditioning. Finally allows you to keep your cool and generator free!*
- *New dual Mastervolt 120V and 240V inverters! Allows for up to 7,000 watts of combined dockside or on the hook power!*
- *New Mastervolt Lithium-Ion battery banks for the house systems giving you a near lifetime of maintenance free, endless cycle power.*
- *New Mastervolt solar power regulator ready and set for you to install any solar panels you wish to add to the quiet running of all systems.*
- *New Dual 200-amp Delstar engine alternators to keep your new lithium house banks full and ready to keep cruising.*



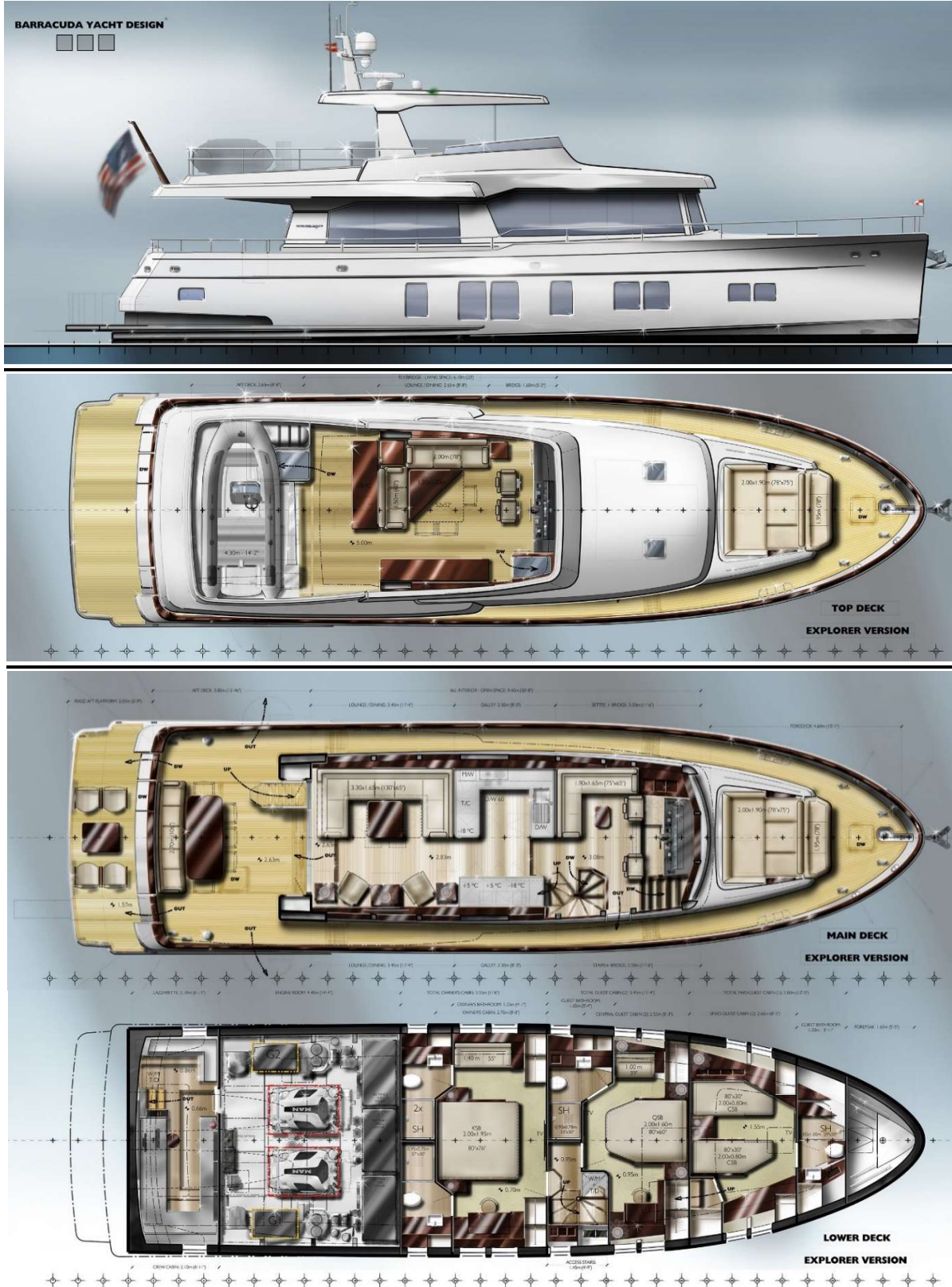
Construction



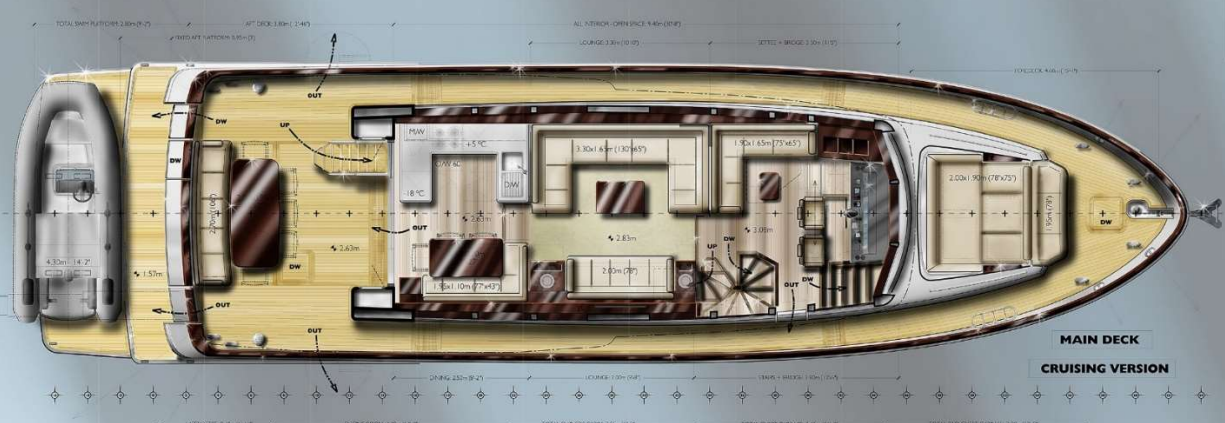
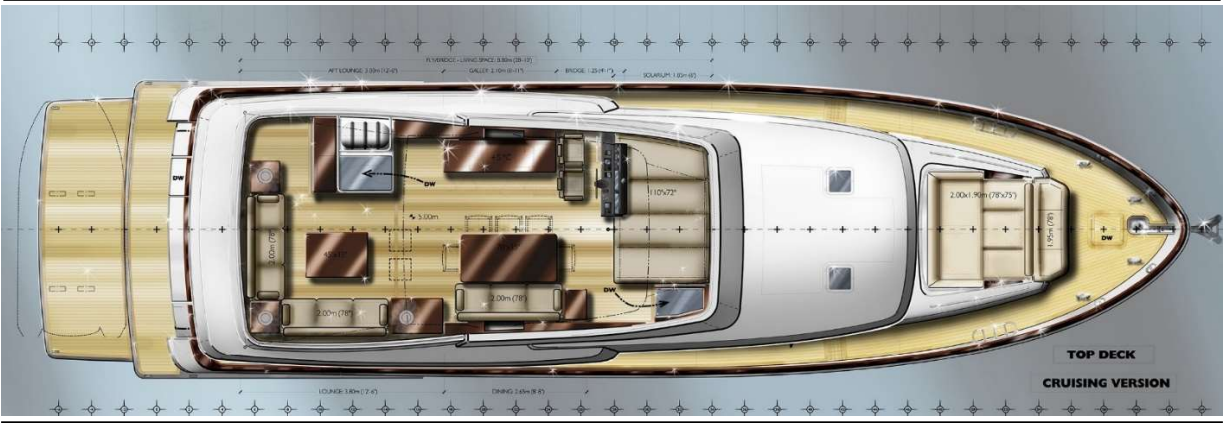


LAYOUTS AND RENDERINGS EXAMPLES

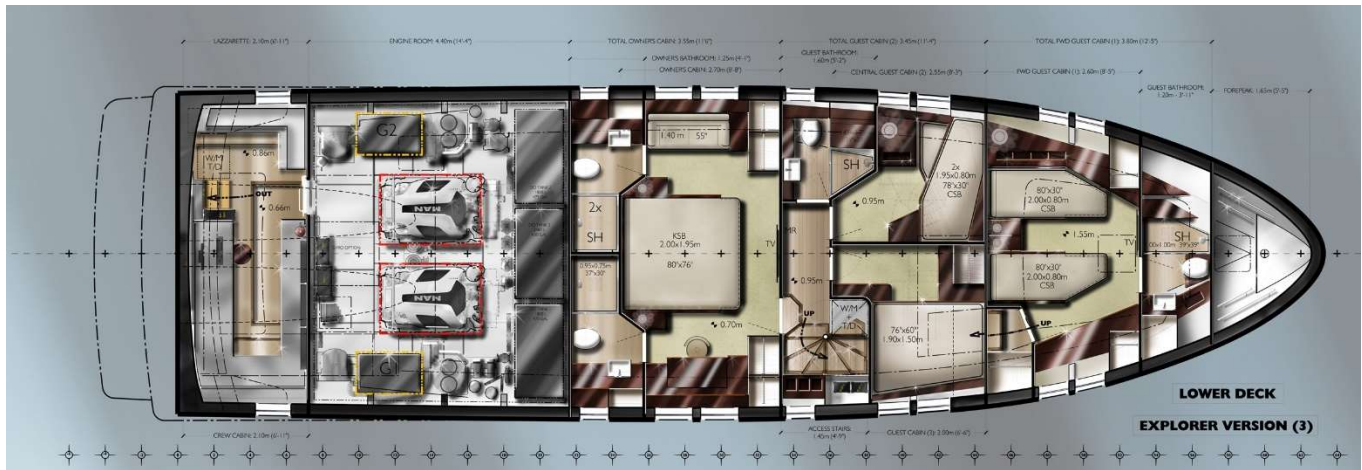
65' Explorer Version:



68' Cruising Version:



Explorer Version: Lower Deck Option

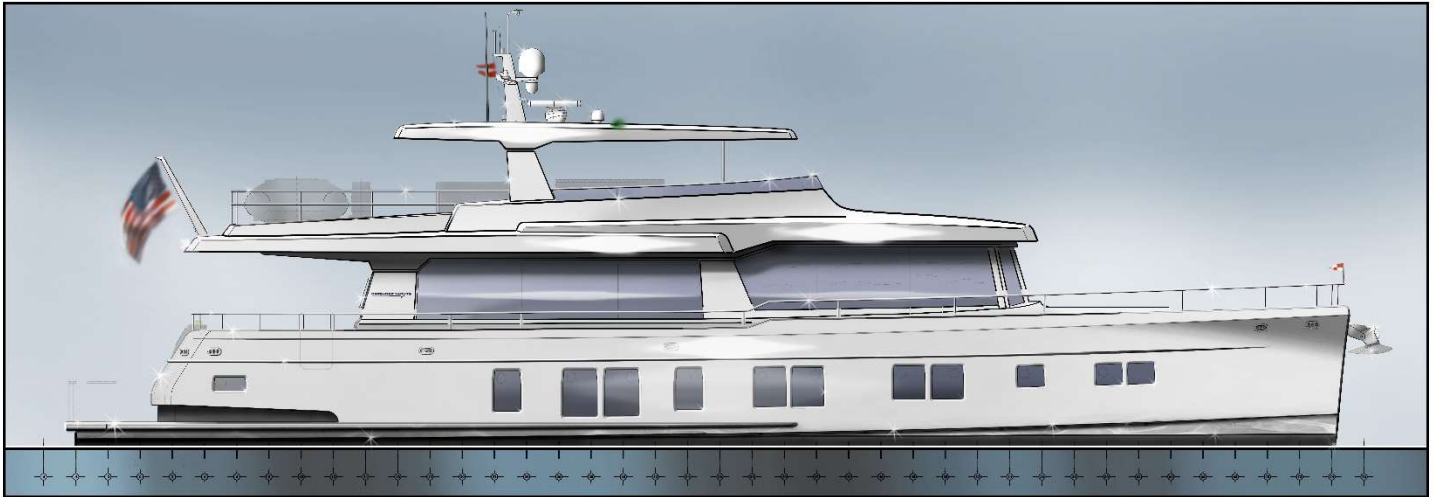


FOUR STATEROOM OPTION WITH PORT STATEROOM BUNKS

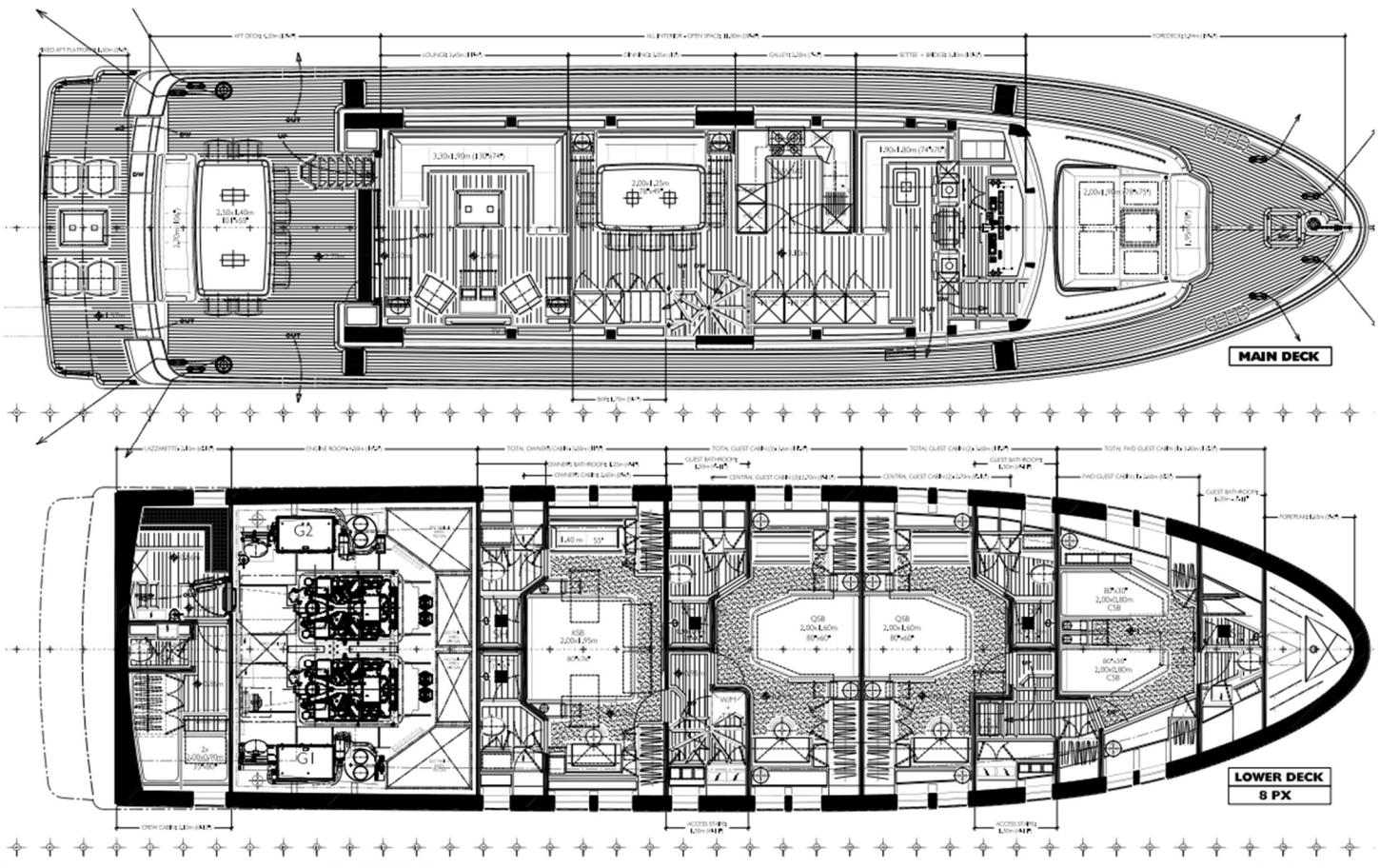
72' Cockpit Version:



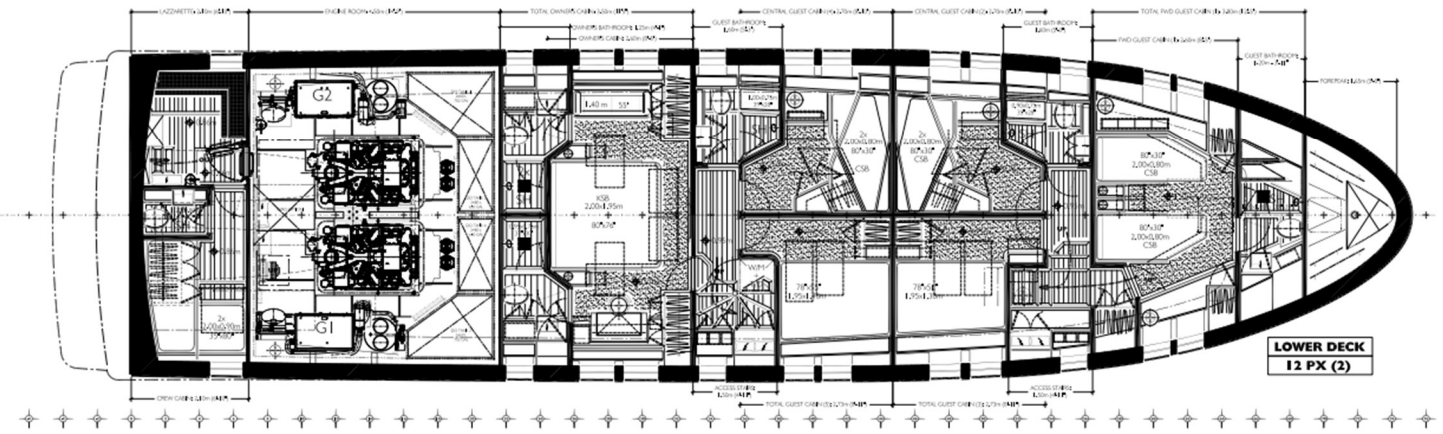
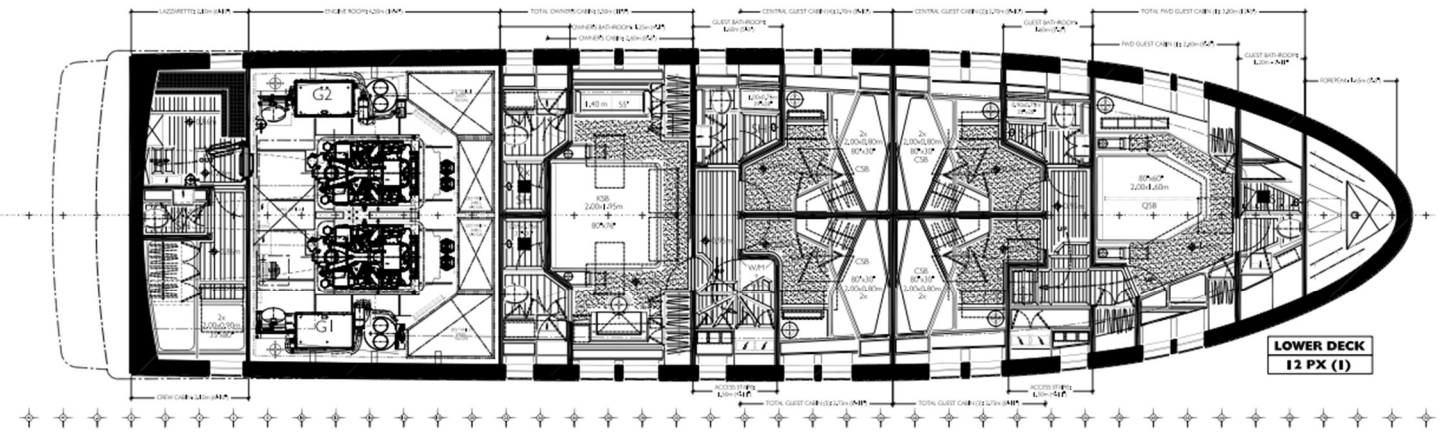
78' / 83' Version:



(4) Full Beam Stateroom Layout



4, 5 & 6 Stateroom Options



Flybridge

