

# OFFSHORE YACHTS



**THE OFFSHORE 80'/85'/90' VOYAGER**  
As with every Offshore — “The softest ride on the water.”



*Exemplifying over 60 years of excellence in design and craftsmanship*



52 / 54



58 / 62



64 Voyager



66 / 72



76 / 80



80 / 85/90 Voyager



87 / 92

LUKE BROWN YACHTS  
Ft. Lauderdale: 954.525.6617  
Web: [www.lukebrownyachts.com](http://www.lukebrownyachts.com)  
Email: [sales@lukebrown.com](mailto:sales@lukebrown.com)

**OFFSHORE**  
[www.offshoryachts.net](http://www.offshoryachts.net)

OFFSHORE WEST, INC.  
Newport Beach: 949.673.5401  
Web: [www.offshorewest.com](http://www.offshorewest.com)  
Email: [yachts@offshorewest.com](mailto:yachts@offshorewest.com)

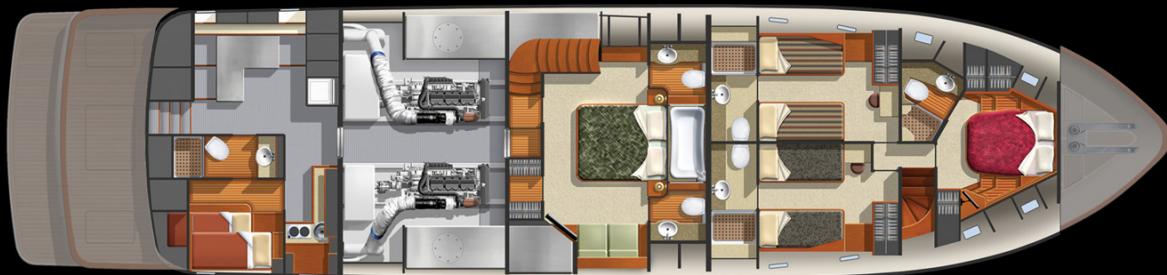
# The OFFSHORE 80/85/90 Voyager

Included with this 80/85/90 Offshore are:

Offshore Hull Design: Deep, finely-veed forward section allows a smooth, knife-like water entry, cutting cleanly through seas, achieving extraordinary directional stability, and virtually eliminating slapping and pounding. Thus - "The softest ride on the water."

- Standard Power: Twin C18 Caterpillar 1,015hp engines / Twin 30kW NL generators
  - ABT 12-foot roll-fin hydraulic stabilizers
  - 50hp bow thruster & 40hp stern thruster
- ZF Joystick Maneuvering controls at four stations (includes 2 wing stations)
  - 1,400gpd reverse osmosis Sea Recovery watermaker
  - 2,500lb Nautical Structures hydraulic cable, boom, and rotation davit
  - Marine Air 120,000 btu expansion A/C and heat system
    - Energy saving LED lighting package
- SeaTorque enclosed shaft system reduces noise, increases fuel efficiency
  - Three Stidd helm chairs in wheelhouse
- High-polish, welded, stainless-steel engine beds set in Chockfast
  - Engine room & aft deck video camera systems
- LED TVs in salon (40" w/ Auton elec. lift), staterooms, & forward lounge
  - Maretron ship's monitoring system
- Included: Freight, duty, & commissioning; \$85K decor & \$110K electronics allowances

- Subject to change -



SPECIFICATION	80 VOYAGER	85 VOYAGER	90 VOYAGER
<b>Overall Length</b>	<b>80' 11"</b>	<b>84' 11"</b>	<b>89' 11"</b>
<b>Beam</b>	<b>21' 6"</b>	<b>21' 6"</b>	<b>21' 6"</b>
<b>Displacement (dry)</b>	<b>178,000 lbs</b>	<b>192,000 lbs</b>	<b>198,000 lbs</b>
<b>Fuel/Water Capacity</b>	<b>3,000/600 gal</b>	<b>3,140/600 gal</b>	<b>3,140/600 gal</b>